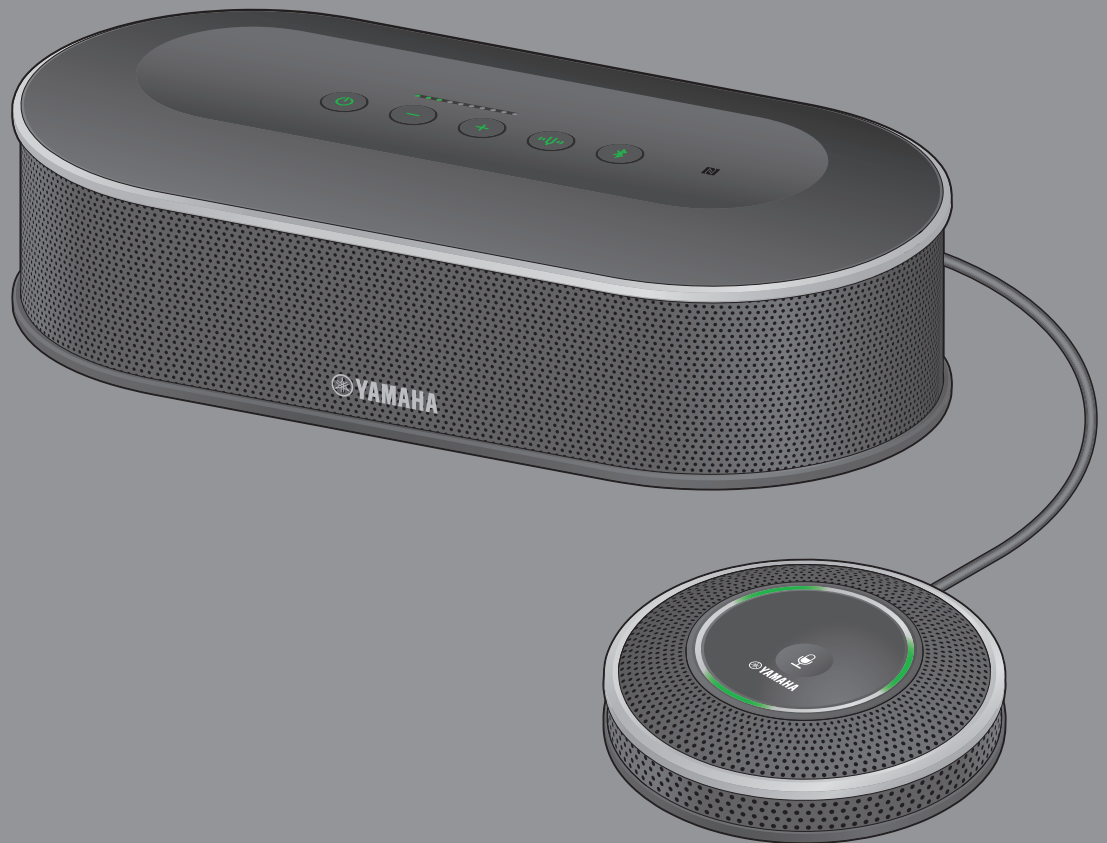


YVC-1000



Contents

To use a wired handheld microphone by connecting to YVC-1000	1
To use Line 6 XD-V35 by connecting to YVC-1000.....	6
To use Revolabs HD Single/Dual by connecting to YVC-1000 ...	11

To use a wired handheld microphone by connecting to YVC-1000

You can connect up to two handheld microphones to YVC-1000, and use them as external microphones. Voice through the external microphone is output not only to a communication partner, but also from the connected YVC-1000 speaker. With the connected external microphone, you can turn up the voice volume at your site and also have a conversation with the partner. To use this function, you need the YVC-1000 firmware ver.2.00 or later.

■ Operability confirmed handheld microphone

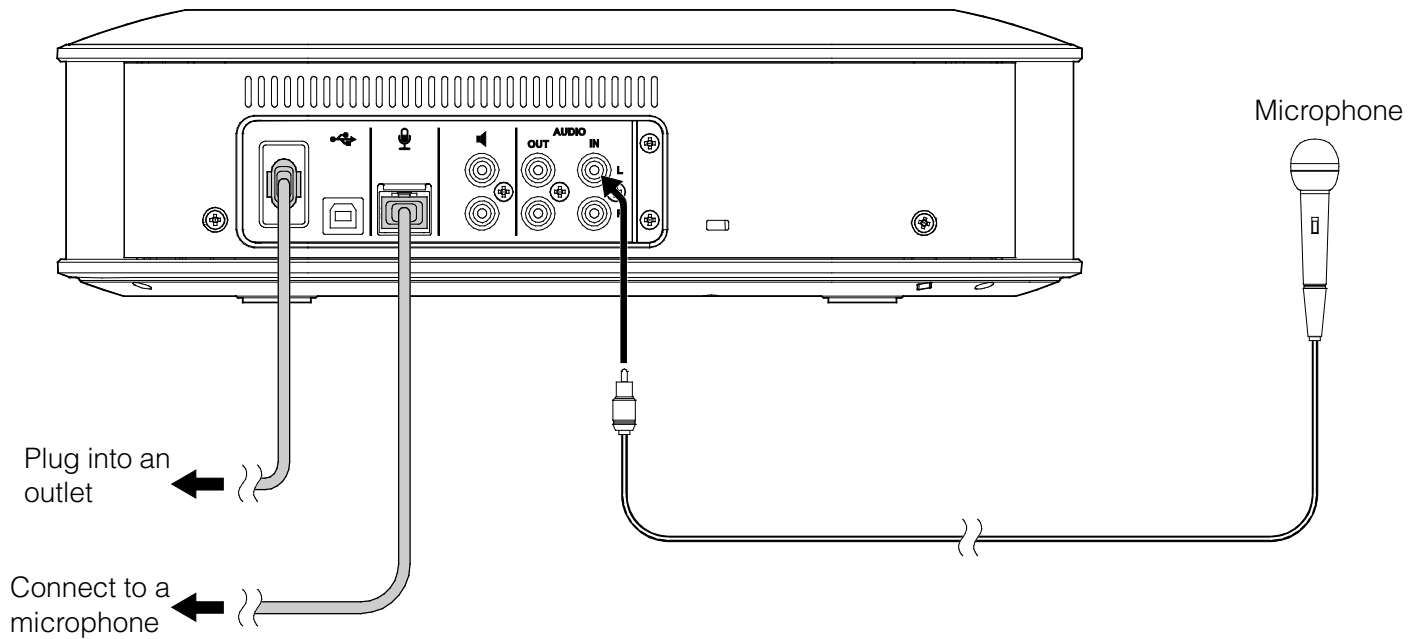
- Yamaha: DM-105
- Audio-Technica: PRO41
- Shure: SM58

* Some models may be unavailable in some areas.

Note

Handheld microphones which can be directly connected to YVC-1000 are dynamic microphones. Do not use a condenser microphone.

Step 1: How to connect



1. Connect the YVC-1000 audio input terminal (RCA pin) and a handheld microphone with a commercially available audio cable.

Before connecting the handheld microphone, turn off YVC-1000.

Prepare a proper audio cable for the handheld microphone connecting terminal.

Operability confirmed handheld microphone: "RCA pin plug↔XLR (Female)" audio cable

Memo

- Both of the YVC-1000 audio input terminals (L and R) are connectable.
- You can use the external microphone simultaneously with the microphone supplied with YVC-1000, or the optional microphone (YVC-MIC1000EX). Also, you can use it in combination with an external speaker.

Step 2: How to set

To connect the handheld microphone to YVC-1000 for use, you have to change the YVC-1000 settings. Use the application software "YVC-1000 Configurator" to change the settings.

Memo

This manual explains how to change the settings with a PC. Please refer to the YVC-1000 user's manual when checking difference in operation between a PC and a Mac.

1. Download "YVC-1000_Configurator_XXX.zip" from the following website, and decompress the file.

<http://www.yamaha.com/products/en/communication/download/>

Memo

"XXX" in the file name indicates the version of YVC-1000 Configurator.

2. Connect YVC-1000 and the PC with the supplied USB cable.

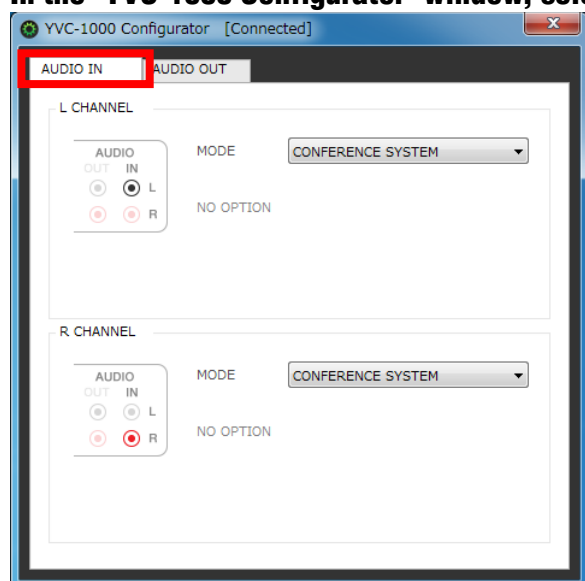
3. Double-click "YVC-1000 Configurator.exe" in the decompressed folder.

"YVC-1000 Configurator" starts up. At the initial startup, the "YVC-1000 Licensing Agreement" dialogue appears. Read the information carefully, then select "Accept all terms of the license agreement" and click "OK."

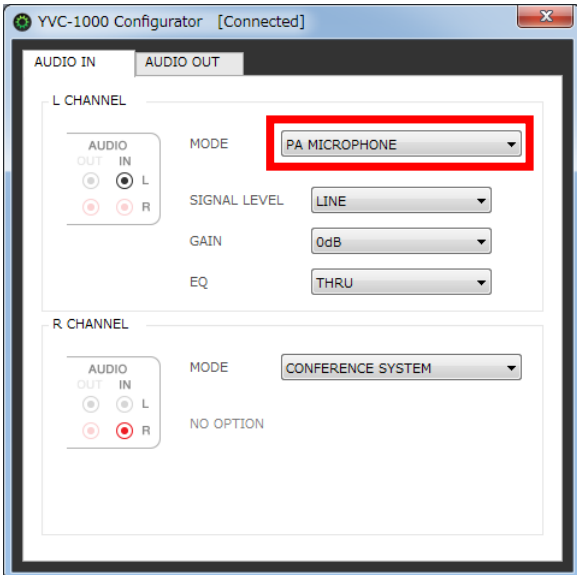
Memo

Also, when you re-download the latest version of "YVC-1000 Configurator," the "YVC-1000 Licensing Agreement" dialogue appears at the initial startup.

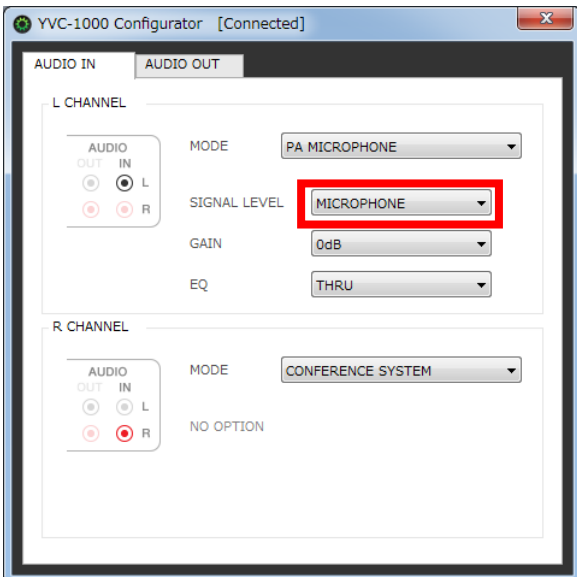
4. In the "YVC-1000 Configurator" window, select the "AUDIO IN" tab.



5. Select "PA MICROPHONE" in "MODE" of the terminal to which the handheld microphone is connected.



6. Select "MICROPHONE" in "SIGNAL LEVEL."



7. Test to check sound of the handheld microphone.

If there is a problem, change the sound volume and tone with "YVC-1000 Configurator."

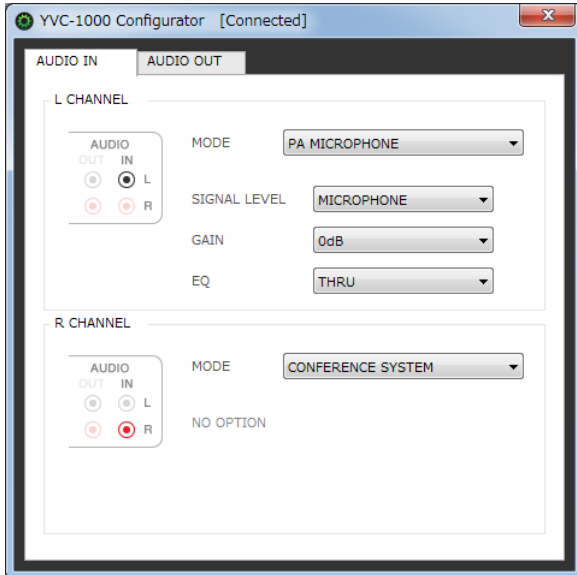
Note

Voice through the handheld microphone is output not only to a communication partner, but also from the YVC-1000 speaker. When feedback occurs, enlarge the distance between the handheld microphone and the speaker, or refer to the section "How to change the sound volume and tone" in this manual, and decrease "GAIN."

■ How to change the sound volume and tone

On the assumption that the distance between the handheld microphone and your mouth is 3cm, the following values are recommended. Based on these values, change the settings according to your operation environment.

- GAIN : 0dB
- EQ : THRU



GAIN

Adjust the sensitivity of the handheld microphone by 3dB.

Sensitivity: -12 dB (minimum sensitivity) to +12 dB (maximum sensitivity)

EQ

Change the sound tone of the handheld microphone.

Setting	Detail
THRU	Does not change the tone.
LOW CUT	Turns down the low pitch sound.
LOW BOOST	Turns up the low pitch sound.

To use Line 6 XD-V35 by connecting to YVC-1000

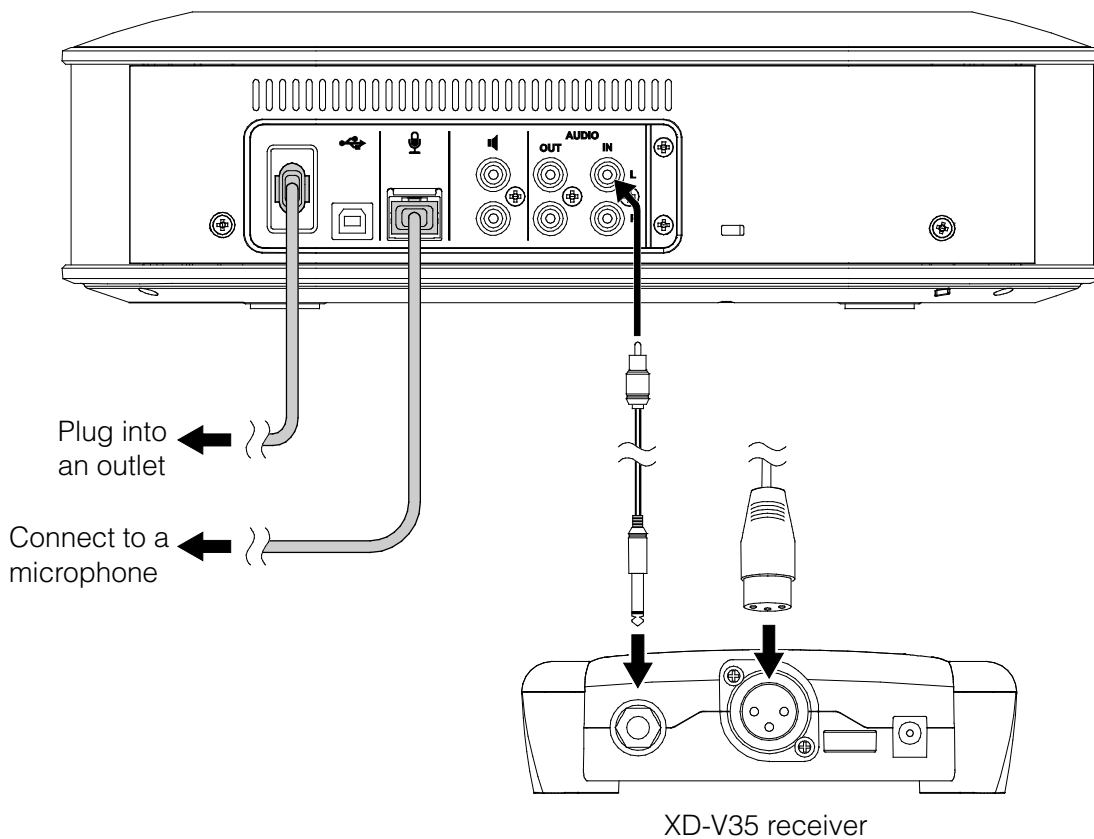
You can connect up to two units of Line 6 XD-V35 (Digital Wireless Handheld Mic System) to YVC-1000, and use them as external microphones. Voice through the external microphone is output not only to a communication partner, but also from the connected YVC-1000 speaker. With the connected external microphone, you can turn up the voice volume at your site and also have a conversation with the partner.

To use this function, you need the YVC-1000 firmware ver.2.00 or later.

Memo

Please refer to the operation manual supplied with XD-V35 for more detailed operation of Line 6 XD-V35.

Step 1: How to connect



1. **Connect the YVC-1000 audio input terminal (RCA pin) and the XD-V35 receiver with a commercially available audio cable.**

Before connecting the XD-V35 receiver, turn off YVC-1000.

Prepare a proper audio cable for the XD-V35 receiver's connecting terminal.

Unbalanced 1/4 inch audio output connector: "RCA pin plug↔PHONE plug (monaural)" audio cable

Balanced XLR audio output: "RCA pin plug↔XLR (Female)" audio cable

Memo

- Both of the YVC-1000 audio input terminals (L and R) are connectable.
- You can use the external microphone simultaneously with the microphone supplied with YVC-1000, or the optional microphone (YVC-MIC1000EX). Also, you can use it in combination with an external speaker.

Step 2: How to set

To connect the XD-V35 to YVC-1000 for use, you have to change the YVC-1000 settings. Use the application software "YVC-1000 Configurator" to change the settings.

Memo

This manual explains how to change the settings with a PC. Please refer to the YVC-1000 user's manual when checking difference in operation between a PC and a Mac.

1. **Download "YVC-1000_Configurator_XXX.zip" from the following website, and decompress the file.**

<http://www.yamaha.com/products/en/communication/download/>

Memo

"XXX" in the file name indicates the version of YVC-1000 Configurator.

2. **Connect YVC-1000 and the PC with the supplied USB cable.**

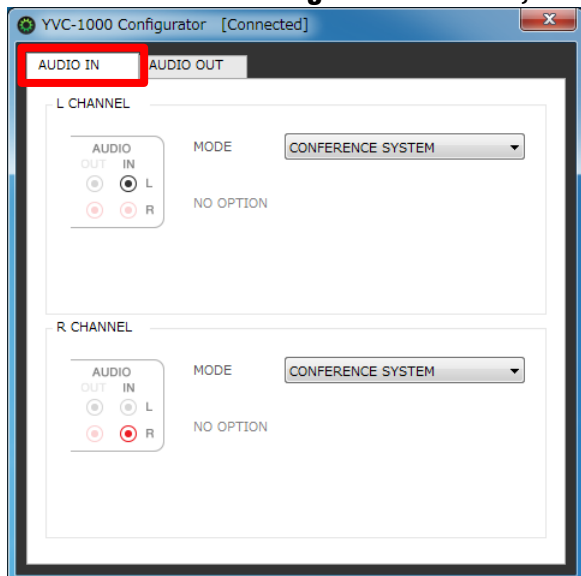
3. **Double-click "YVC-1000 Configurator.exe" in the decompressed folder.**

"YVC-1000 Configurator" starts up. At the initial startup, the "YVC-1000 Licensing Agreement" dialogue appears. Read the information carefully, then select "Accept all terms of the license agreement" and click "OK."

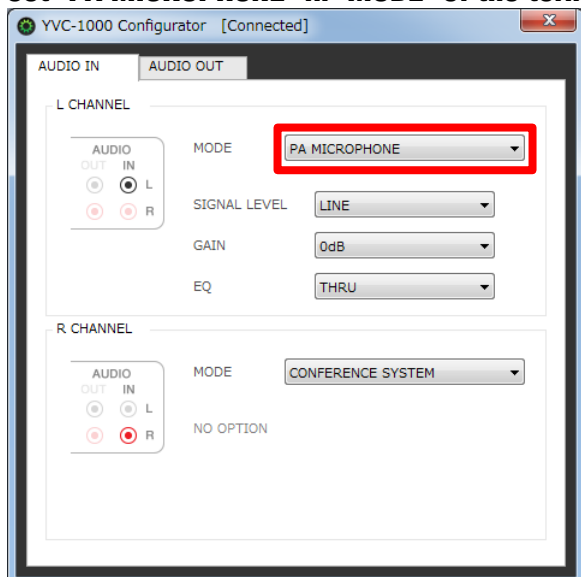
Memo

Also, when you re-download the latest version of "YVC-1000 Configurator," the "YVC-1000 Licensing Agreement" dialogue appears at the initial startup.

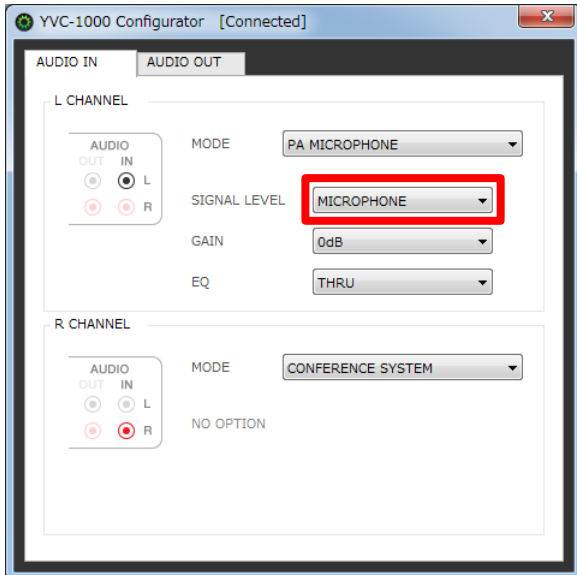
4. In the "YVC-1000 Configurator" window, select the "AUDIO IN" tab.



5. Set "PA MICROPHONE" in "MODE" of the terminal to which the XD-V35 receiver is connected.



6. Select "MICROPHONE" in "SIGNAL LEVEL."



7. Test to check sound of the wireless microphone.

If there is a problem, change the sound volume and tone with "YVC-1000 Configurator."

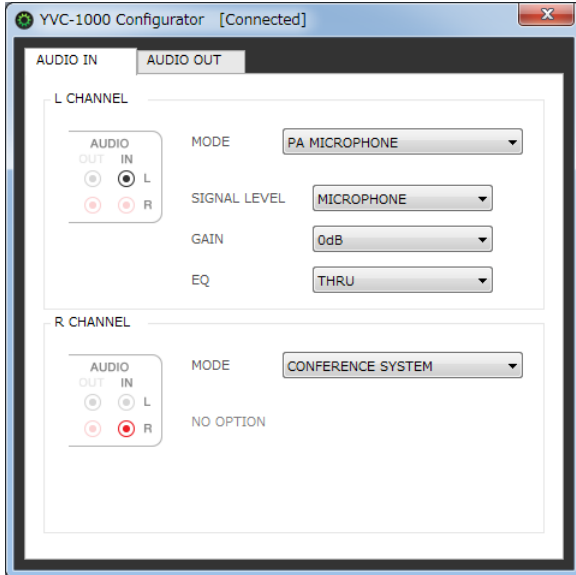
Note

Voice through the wireless microphone is output not only to a communication partner, but also from the YVC-1000 speaker. When feedback occurs, enlarge the distance between the wireless microphone and the speaker, or refer to the section "How to change the sound volume and tone" in this manual, and decrease "GAIN."

■ How to change the sound volume and tone

On the assumption that the distance between the wireless microphone and your mouth is 3cm, the following values are recommended. Based on these values, change the settings according to your operation environment.

- GAIN : 0dB
- EQ : THRU



GAIN

Adjust the sensitivity of the wireless microphone by 3dB.

Sensitivity: -12 dB (minimum sensitivity) to +12 dB (maximum sensitivity)

EQ

Change the sound tone of the wireless microphone.

Setting	Detail
THRU	Does not change the tone.
LOW CUT	Turns down the low pitch sound.
LOW BOOST	Turns up the low pitch sound.

To use Revolabs HD Single/Dual by connecting to YVC-1000

You can connect one unit of Revolabs HD Single/Dual to YVC-1000 and use it as an external microphone. Voice through the external microphone is output not only to a communication partner, but also from the connected YVC-1000 speaker. With the connected external microphone, you can turn up the voice volume at your site and also have a conversation with the partner. To use this function, you need the YVC-1000 firmware ver.2.00 or later.

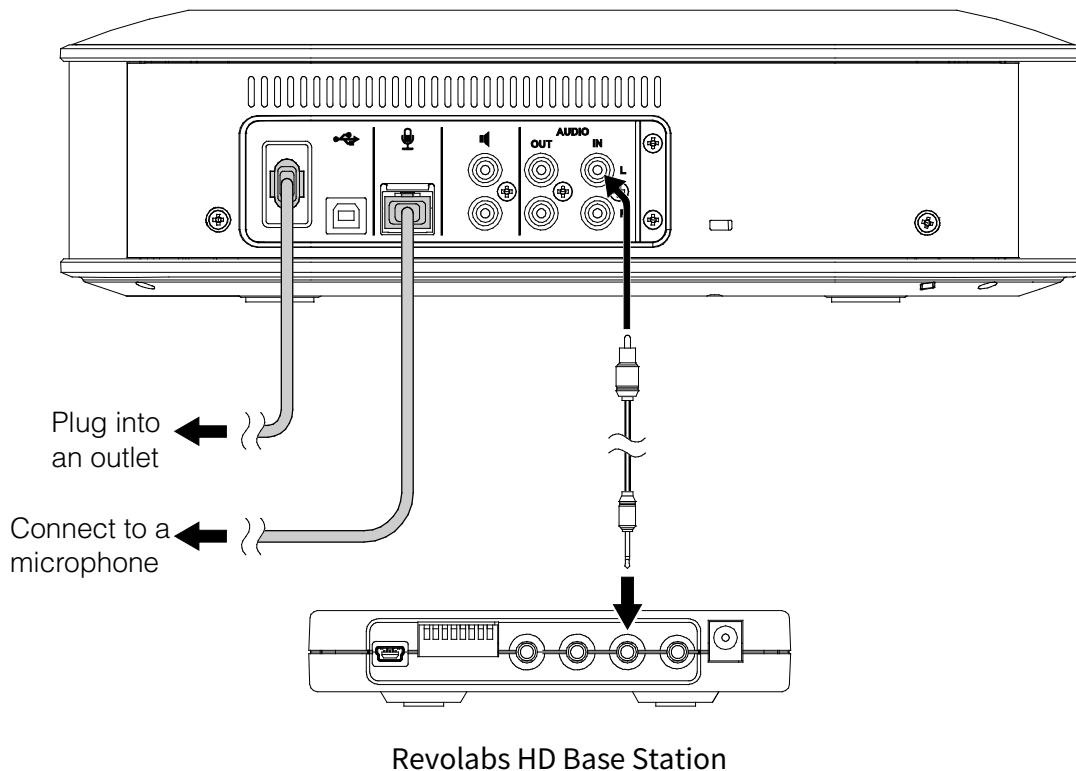
■ Applicable wireless microphone

- Wearable microphone (HD Wearable Microphones)
- Handheld microphone and dedicated adapter (HD XLR Microphones Wireless Adapter)

Memo

Please refer to the operation manual supplied with Revolabs HD Single/Dual for more detailed operation of Revolabs HD Single/Dual.

Step 1: How to connect



1. Turn off all DIP switches of Revolabs HD Base Station.

2. Connect the YVC-1000 audio input terminal (RCA pin) and the OUT (CH1/CH2) terminal of Revolabs HD Base Station with a commercially available audio cable.

Before connecting Revolabs HD Base Station, turn off YVC-1000.

Prepare an "RCA pin plug↔mini plug (monaural)" audio cable.

Memo

- Both of the OUT terminals (CH1 and CH2) of Revolabs HD Base Station are connectable. When using two wireless microphones, connect them to CH1 and CH2.
- Both of the YVC-1000 audio input terminals (L and R) are connectable. When using two wireless microphones, connect them to the terminal L and the terminal R.
- You can use the external microphone simultaneously with the microphone supplied with YVC-1000, or the optional microphone (YVC-MIC1000EX). Also, you can use it in combination with an external speaker.

Step 2: How to set

To connect Revolabs HD Single/Dual to YVC-1000 for use, you have to change the YVC-1000 settings. Use the application software "YVC-1000 Configurator" to change the settings.

Memo

- This manual explains how to change the settings with a PC. Please refer to the YVC-1000 user's manual when checking difference in operation between a PC and a Mac.
- Change the settings of the terminal to which the audio cable is connected. When using two wireless microphones, change the settings of both terminals.

1. Download "YVC-1000_Configurator_XXX.zip" from the following website, and decompress the file.

<http://www.yamaha.com/products/en/communication/download/>

Memo

"XXX" in the file name indicates the version of YVC-1000 Configurator.

2. Connect YVC-1000 and the PC with the supplied USB cable.

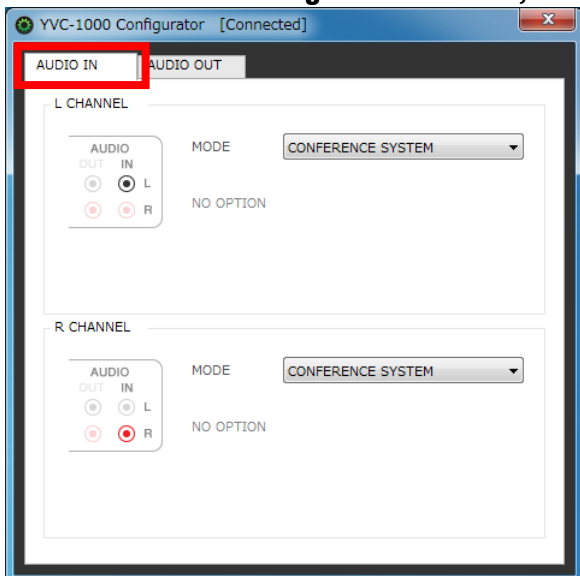
3. Double-click "YVC-1000 Configurator.exe" in the decompressed folder.

"YVC-1000 Configurator" starts up. At the initial startup, the "YVC-1000 Licensing Agreement" dialogue appears. Read the information carefully, then select "Accept all terms of the license agreement" and click "OK."

Memo

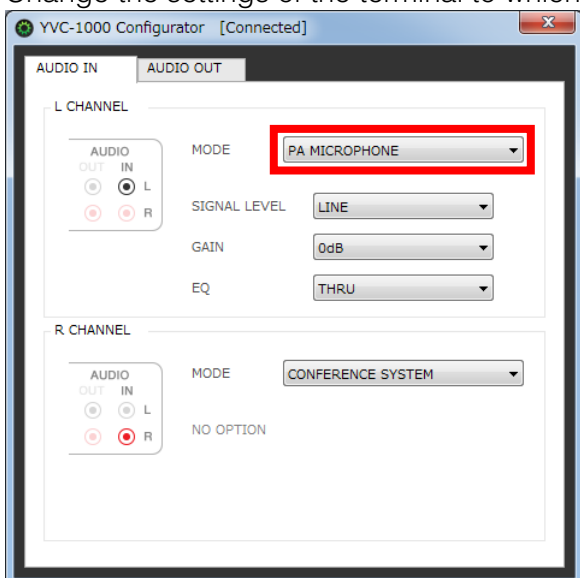
Also, when you re-download the latest version of "YVC-1000 Configurator," the "YVC-1000 Licensing Agreement" dialogue appears at the initial startup.

4. In the "YVC-1000 Configurator" window, select the "AUDIO IN" tab.

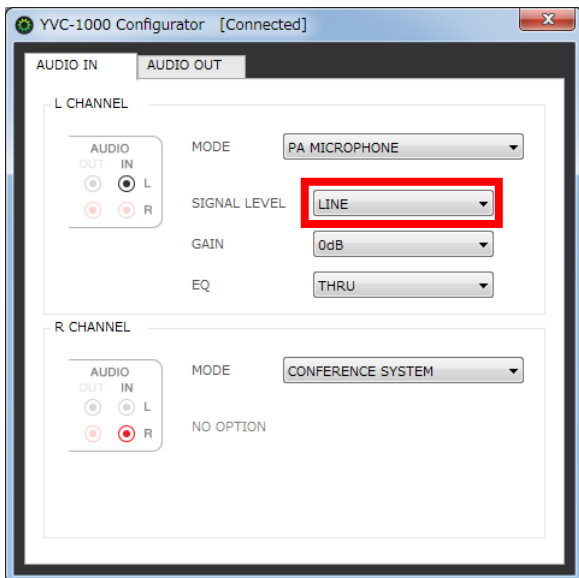


5. Select "PA MICROPHONE" in "MODE".

Change the settings of the terminal to which the audio cable is connected.



6. Select "LINE" in "SIGNAL LEVEL."



7. Change the setting of "GAIN."

Wearable microphone: -6dB

Handheld microphone with dedicated adapter: +6dB

8. Test to check sound of the wireless microphone.

If there is a problem, change the sound volume and tone with "YVC-1000 Configurator."

Note

Voice through the wireless microphone is output not only to a communication partner, but also from the YVC-1000 speaker. When feedback occurs, enlarge the distance between the wireless microphone and the speaker, or refer to the section "How to change the sound volume and tone" in this manual, and decrease "GAIN."

■ How to change the sound volume and tone

Based on the following recommended values, change the settings according to your operation environment.

Wearable microphone:

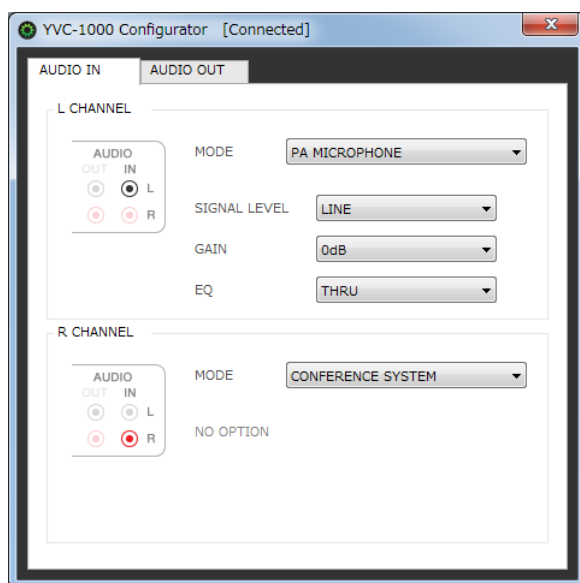
On the assumption that the distance between the wireless microphone and your mouth is 10cm, the following values are recommended:

- GAIN : -6dB
- EQ : THRU

Handheld microphone with dedicated adapter:

On the assumption that the distance between the wireless microphone and your mouth is 3cm, the following values are recommended:

- GAIN : +6dB
- EQ : THRU



GAIN

Adjust the sensitivity of the wireless microphone by 3dB.

Sensitivity: -12 dB (minimum sensitivity) to +12 dB (maximum sensitivity)

EQ

Change the sound tone of the wireless microphone.

Setting	Detail
THRU	Does not change the tone.
LOW CUT	Turns down the low pitch sound.
LOW BOOST	Turns up the low pitch sound.