



Yamaha CS-700
Firmware Version: 1.3
Product Release Notes
August 27, 2019

New features and improvements in this firmware release:

Summary	Notes
Camera	Enhanced camera image
Wireless Extension Microphone	Added Revolabs HD™ wireless microphone series including omni-directional, directional and lapel microphones
Room Control Access	Added SSH protocol option for Room Control Access
Bluetooth Call	Added Bluetooth call auto-join option

Issues resolved in this firmware release:

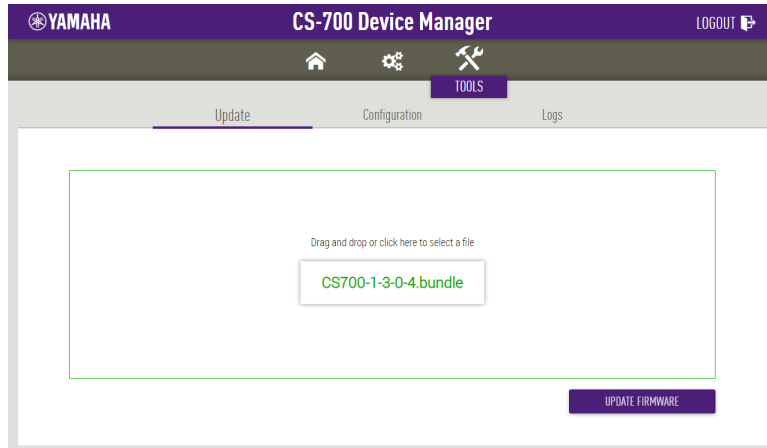
Summary	Notes
Power Saving Mode	Fixed issue that prevents CS-700 from waking up unexpectedly when power saving mode is enabled
Camera Anti-Flicker	Fixed issue that could cause video banding to occur when camera anti-flicker was set to 50Hz

Tips to upgrade to version 1.3:

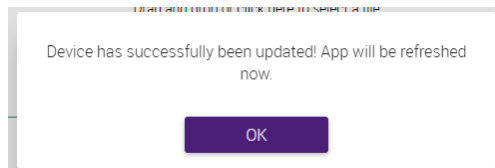
CS-700 firmware includes sub component updates and the new system needs every component upgraded to be used. Following describes the required process to upgrade to version 1.3.

Upgrading from web browser

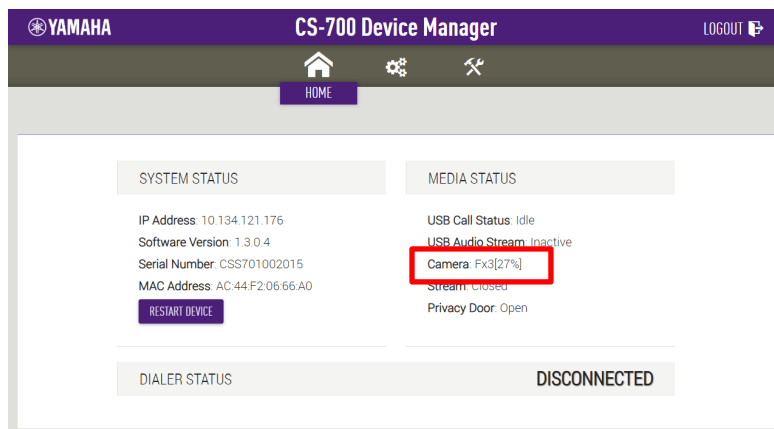
1. Access to your CS-700 from web browser then go to "TOOLS" -> "Update".
2. Drag and drop the firmware file into the browser window and click "UPDATE FIRMWARE". The update process will start.



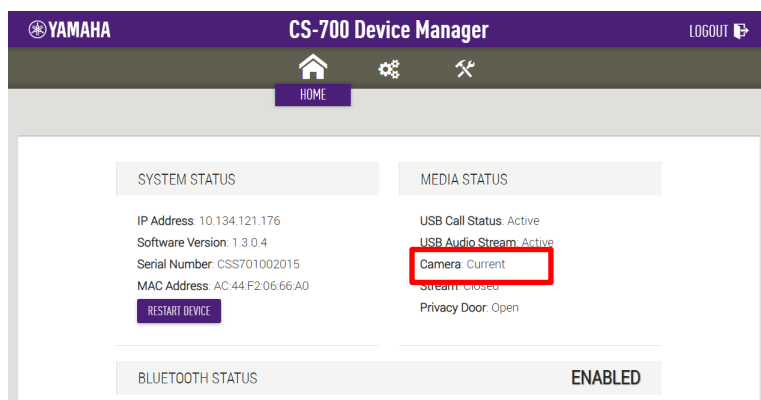
3. Once the main system update is completed, the following message will be shown. Then the CS-700 will reboot automatically and will start upgrading sub components. The browser will show the home screen again.



4. During the sub component upgrading, "MEDIA STATUS" -> "Camera" will show the updating progress as below.



5. Once sub components upgrading is completed, that message will show "Current" as below.

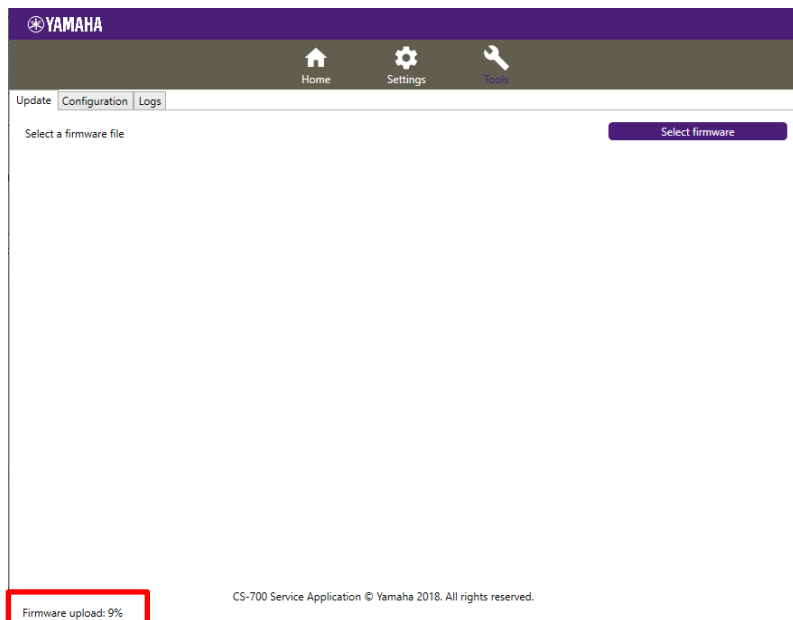




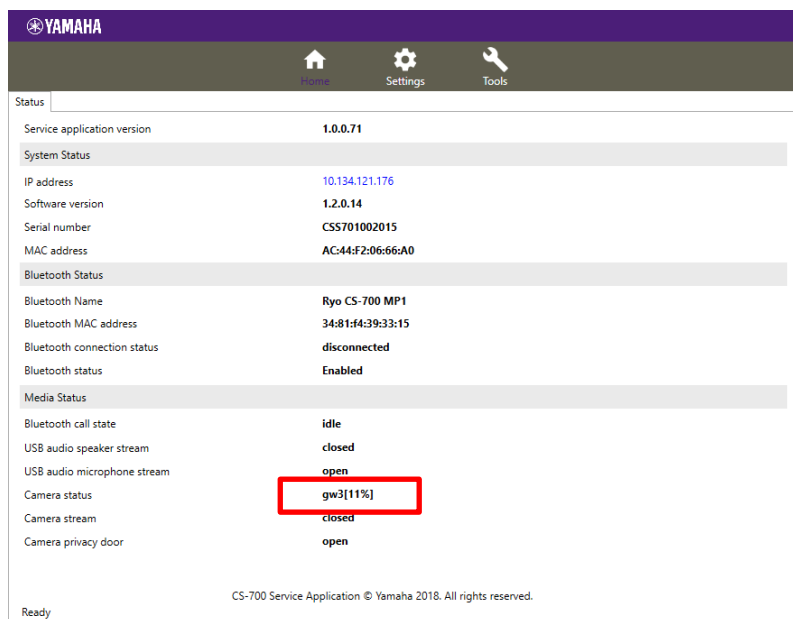
6. Once every component updating is completed, the boot-up chime sounds and ready to use.

Upgrading from Service Application

1. Connect PC/Mac to your CS-700 and run CS-700 Service Application.
2. Go to "Tools" -> "Update" and click "Select firmware", then choose the firmware file. The update process will start



3. Once the main system update is completed, the CS-700 will reboot automatically and will start upgrading sub components.
4. During the sub component upgrading, "MEDIA STATUS" -> "Camera status" on the home screen will show the updating progress as below.



5. Once sub components upgrading is completed, that message will show "Current" as below.



YAMAHA

Home Settings Tools

Status

Service application version	1.0.0.71
-----------------------------	----------

System Status

IP address	10.134.121.176
Software version	1.2.0.14
Serial number	CSS701002015
MAC address	AC:44:F2:06:66:A0

Bluetooth Status

Bluetooth Name	Ryo CS-700 MP1
Bluetooth MAC address	34:81:f4:39:33:15
Bluetooth connection status	disconnected
Bluetooth status	Enabled

Media Status

Bluetooth call state	idle
USB audio speaker stream	closed
USB audio microphone stream	open
Camera status	Current
Camera stream	closed
Camera privacy door	open

Ready

CS-700 Service Application © Yamaha 2018. All rights reserved.

Once every component updating is completed, the boot-up chime sounds and ready to use.