

## Revolabs Fusion Microphone System — Griffin iMic USB Audio Adapter Setup Guide

---

This setup guide will guide you through the steps needed to properly connect a Revolabs Fusion Microphone System to an iMic USB adapter.

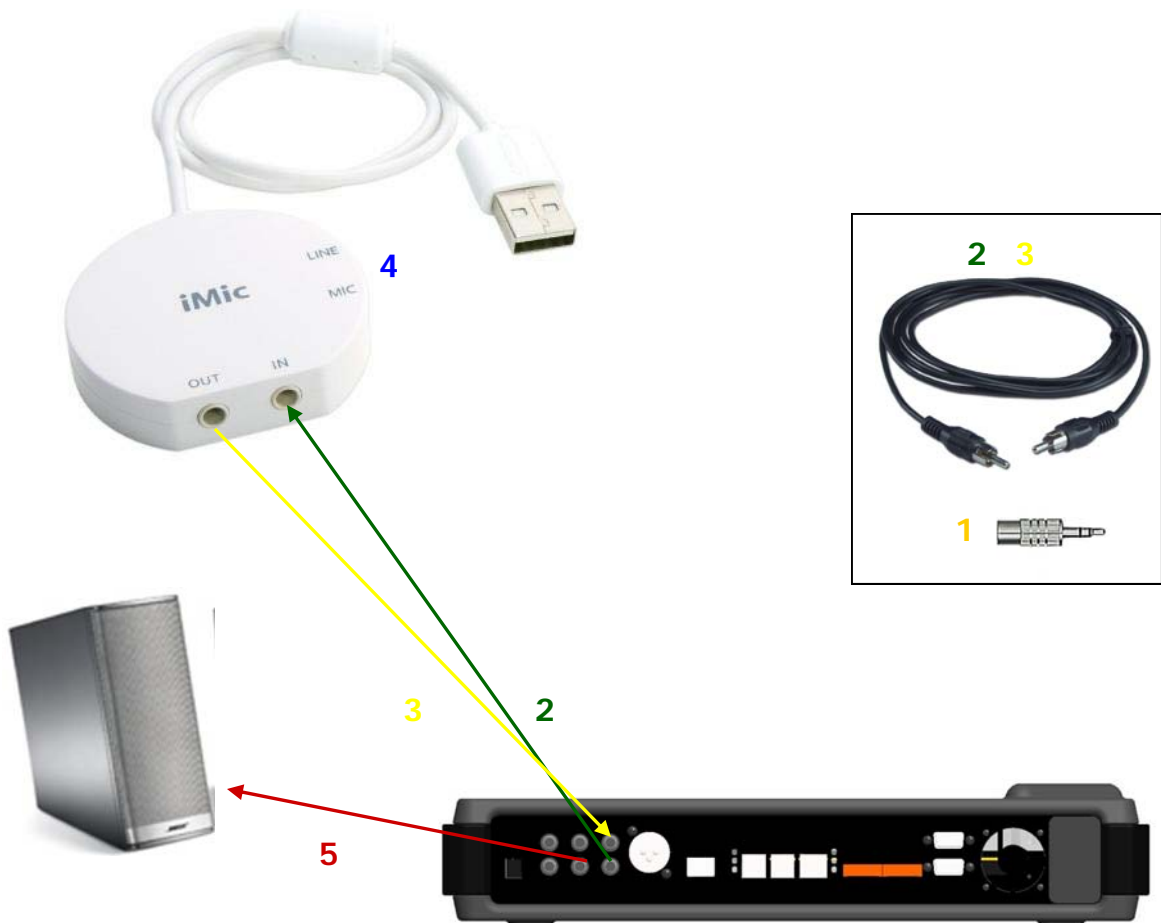
**Note:** *It is important to carefully follow these instructions in order and completely. Otherwise your Fusion Microphone System and/or PC may not function properly. Please read through these instructions completely before proceeding. Contact Revolabs technical support if you have any questions.*  
uc-support@music.yamaha.com

### Requirements for connecting systems:

1. Revolabs Fusion 4 or 8 channel Microphone System
2. Griffin iMic USB Audio Adapter
3. QTY 2 RCA male — RCA male cable
4. QTY 2 RCA female to 1/8" stereo adapter
5. Amplified Speakers

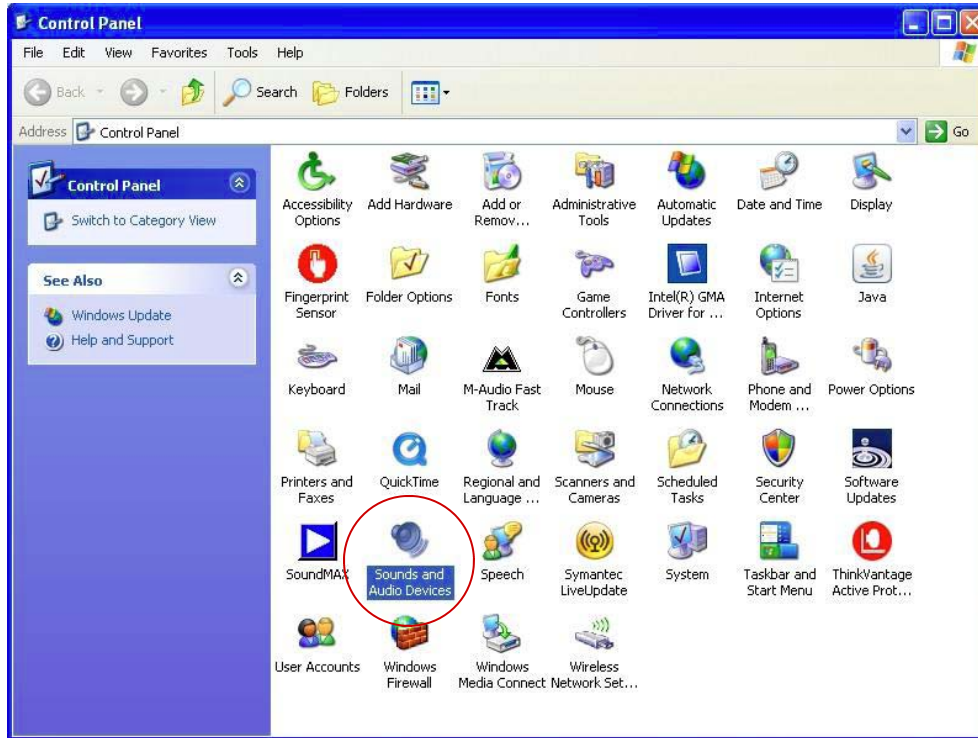
## Connecting the Cables to the Griffin iMic USB Audio Adapter

1. Attach one RCA female to 1/8" stereo male adapter to the end of each RCA cable
2. Connect the Male RCA to RCA audio cable with 1/8" adapter between the RCA "CONF OUT" port on the Fusion and the 1/8" IN port on the iMic.
3. Connect the Male RCA to RCA audio cable with 1/8" adapter between the "CONF IN" port on the Fusion and the 1/8" OUT port on the iMic.
4. Verify that the iMic LINE/MIC switch is set to LINE
5. Connect a Male RCA audio cable between the "Room Out" port on the Fusion and the Amplified Speakers.

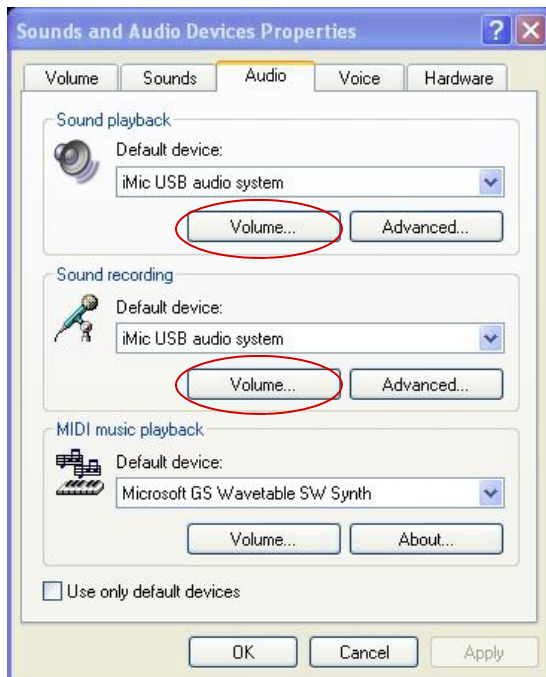


**NOTE: You must use your Fusion remote control to control the room volume for both the audio and video conference calls. Adjusting the volume with the PC will cause echo.**

## Configuring the Griffin iMic USB Audio Adapter

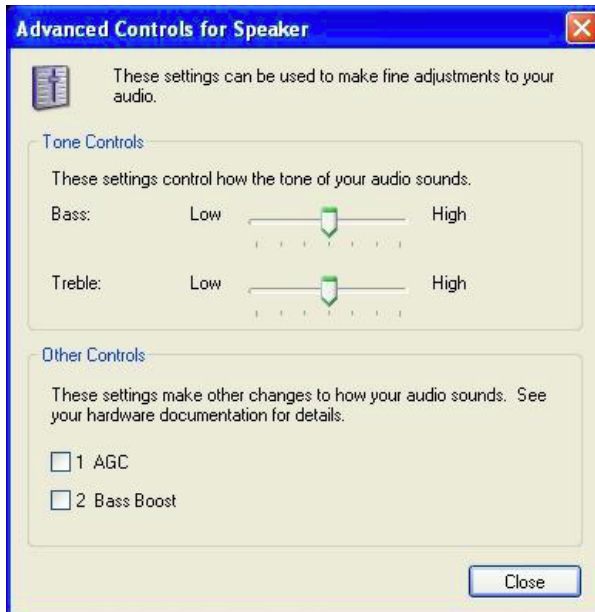
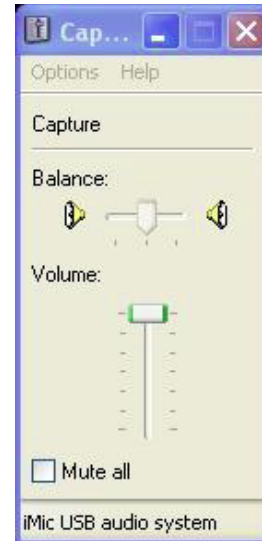
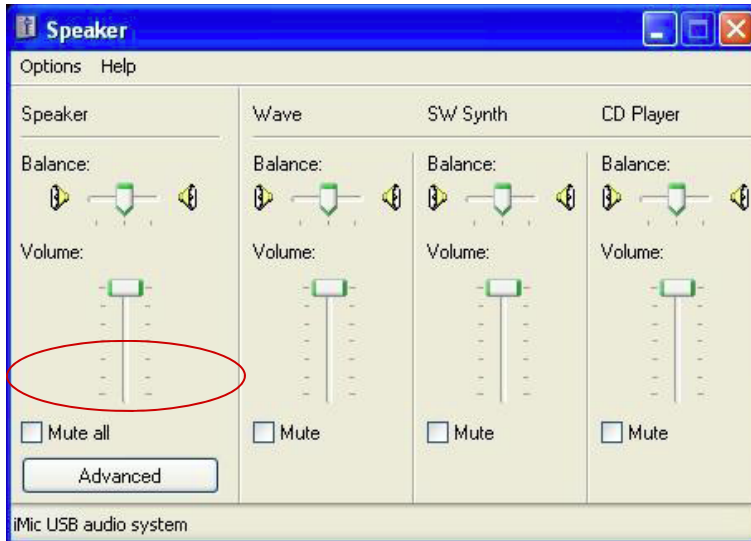


Go to Control Panel and select "Sound and Audio Devices" from the menu.



Set the Playback device and Recording device to the "iMic USB". Then select "volume" for both playback and recording. Make sure the volume level is set to 100% or maximum per the following page

## Configuring the Griffin iMic USB Audio Adapter



Select the Advanced option in the "Speaker" volume window. Make sure all settings are per the following image.

**NOTE: You must use your Fusion remote control to control the room volume for both the audio and video conference calls. Adjusting the volume in the PC will cause echo.**

Yamaha Unified Communications Inc.  
144 North Road, Suite 3250  
Sudbury, MA 01776  
uc-support@music.yamaha.com  
800.326.1088