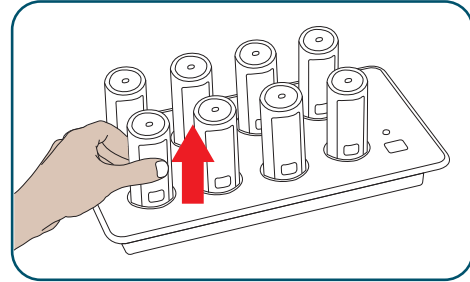


Quick Start Guide

Using a Revolabs Solo Wearable Wireless Microphone

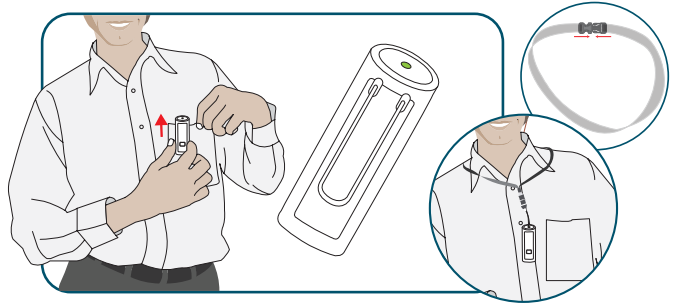
Step #1

Remove the microphone from the Charger Base. The microphones turn on and mute themselves automatically when removed from Charger Base (flashing RED LED) to prevent handling noise while attaching the microphone.



Step #2

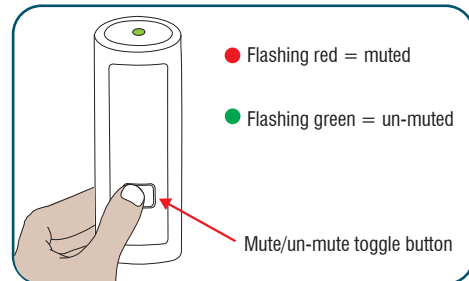
The wireless microphone has a clip on the back allowing the microphone to be easily clipped onto a shirt pocket, blouse or lapel. The microphone can also be clipped to a lanyard and worn around the neck. Attach the microphone to clothing or a lanyard, as close to the mouth as possible (within 6 - 12 inches is recommended). Shorten the lanyard by tying a knot in the material, if necessary.



** make sure top is pointed toward mouth*

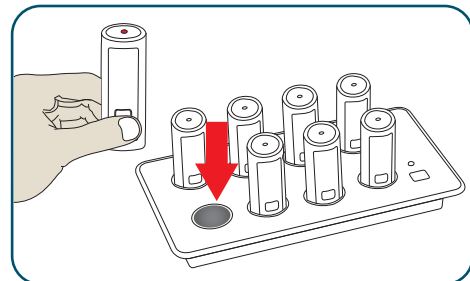
Step #3

With the microphone in the wearing position, un-mute the microphone by pressing and releasing the MUTE button (confirm by viewing flashing GREEN LED).



Step #4

To turn microphones off, first mute the microphone, and then plug it into the Charger Base. Make sure the RED LED turns on. Optionally, the microphone can be turned off manually. Simply press and hold the MUTE button for ~10 seconds until the LED turns solid RED and release button.



You are now ready to experience wireless, rechargeable and secure (encrypted) collaborative freedom.